

## **ZAŁĄCZNIK NR 9**

### **PODKŁADY MAPOWE Z LOKALIZACJĄ DRZEW**

114

DP 2982 S Knurów ul. Szpitalna (dz. nr 1735, rejon budynku nr 7)



DP 2944 S Rzeczyce ul. Piaskowa (naprzeciw pos. 14)

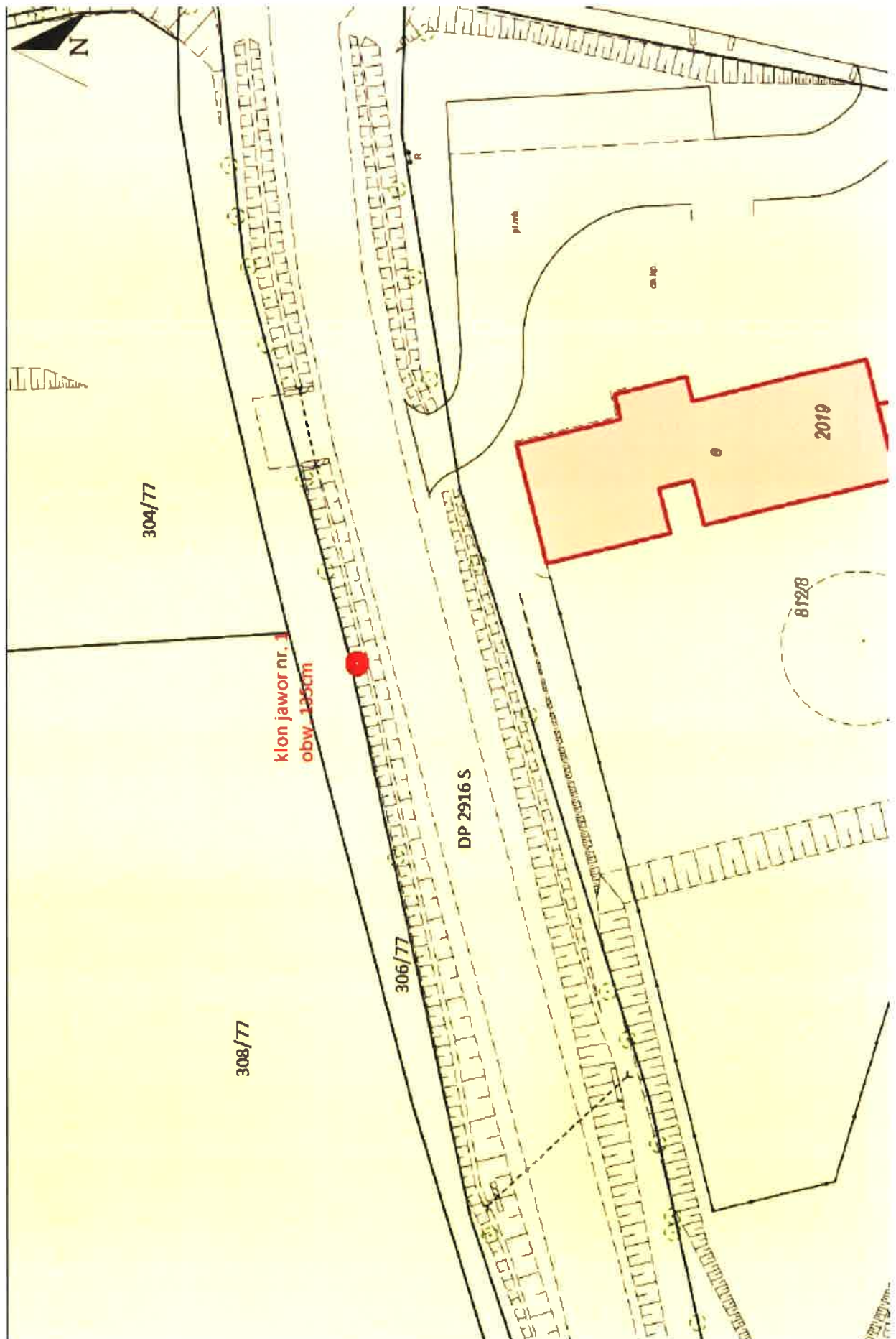


11

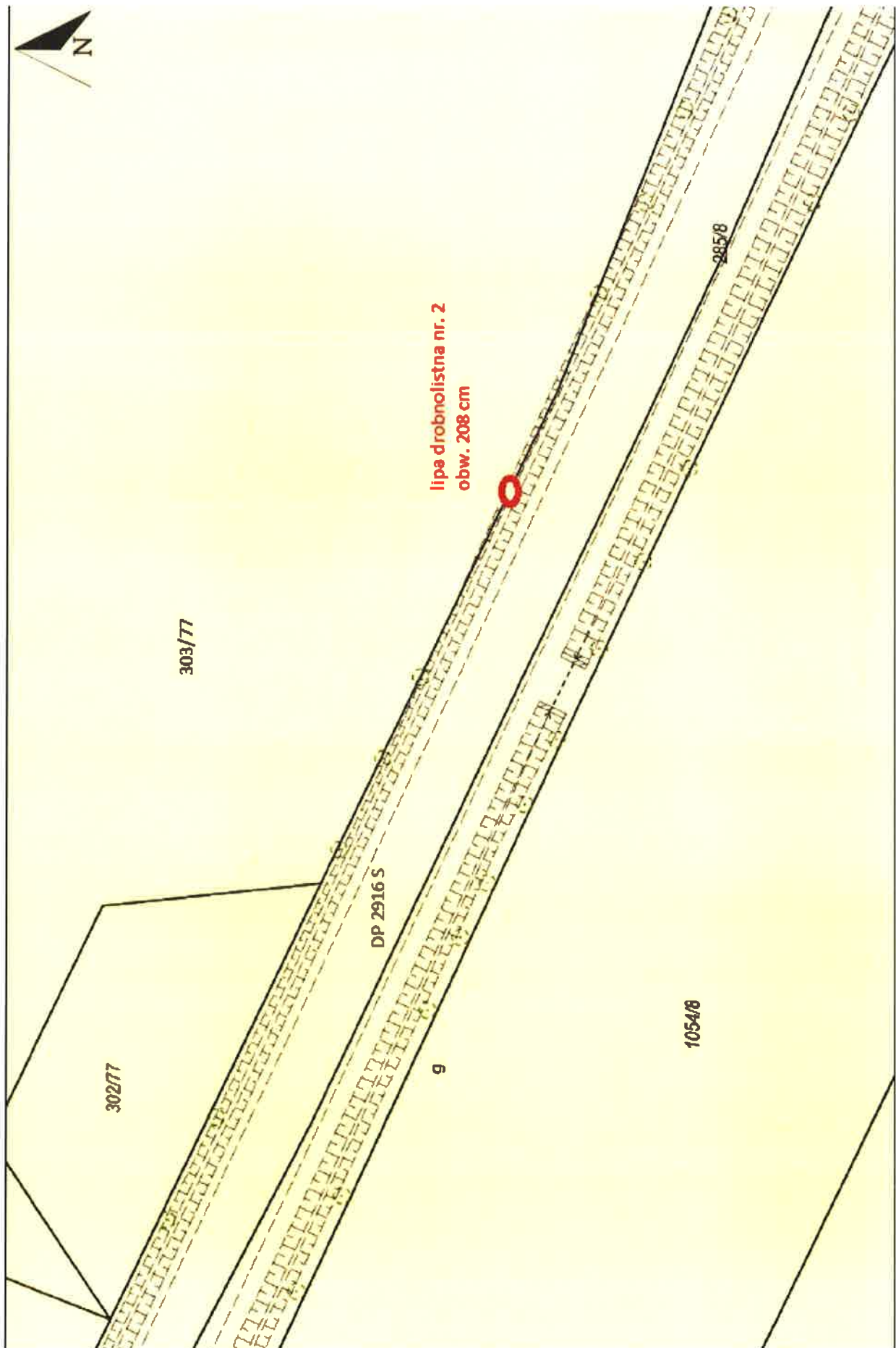
DP 2975 S Pilchowice ul. Wielopole (rejon pos. 3)



DP 2916 S Żernica ul. Gliwicka

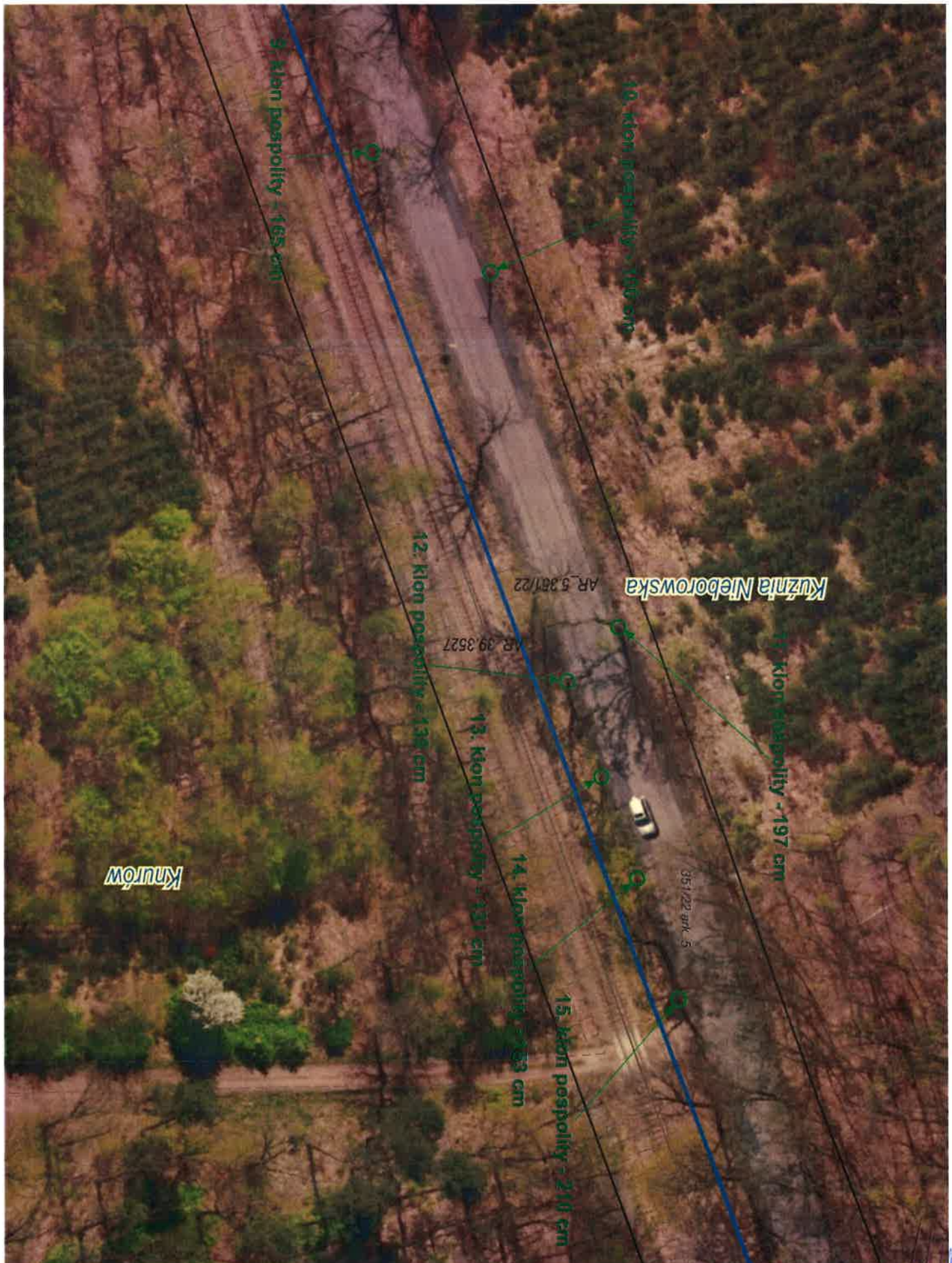


Handwritten signature in blue ink.







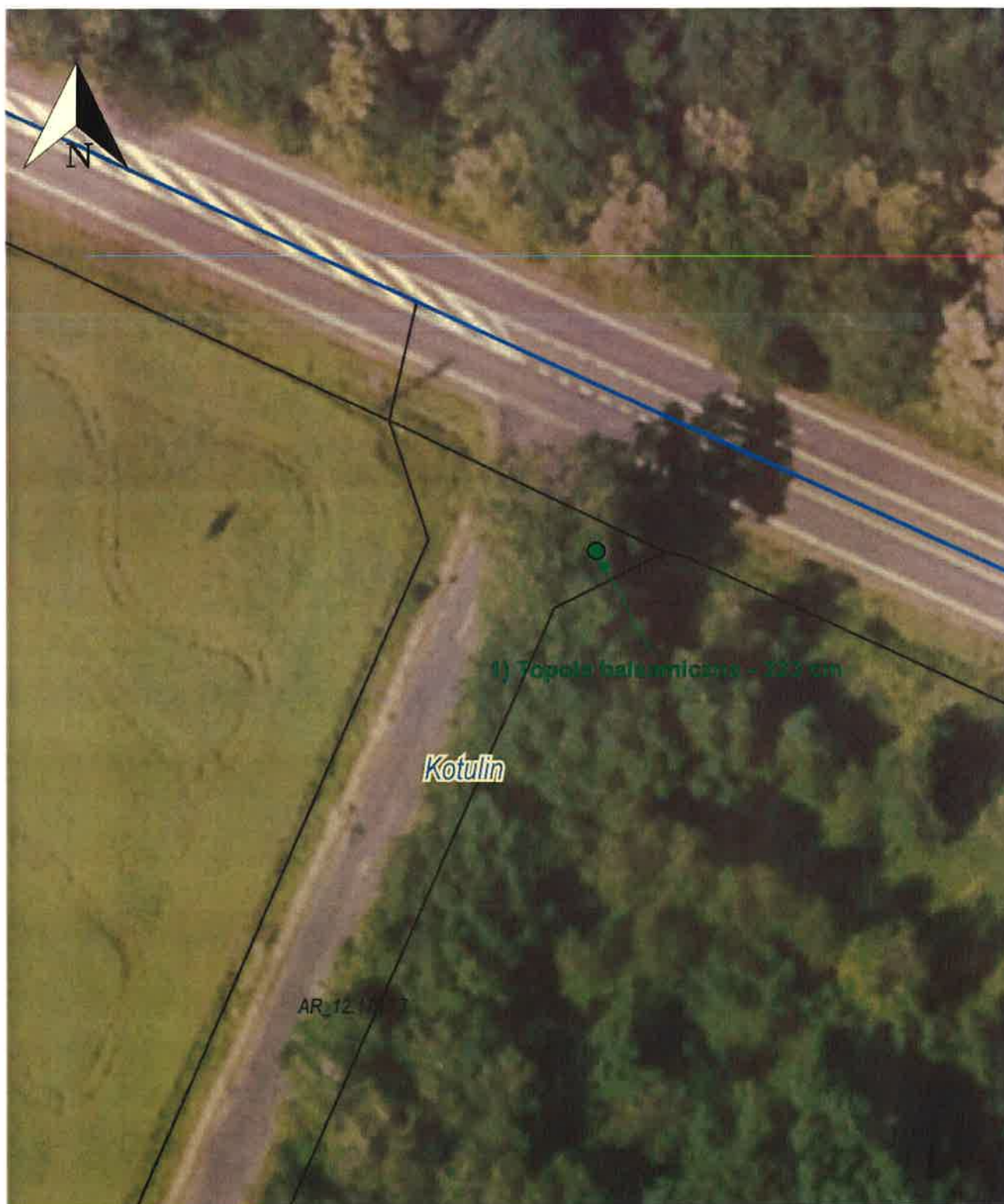




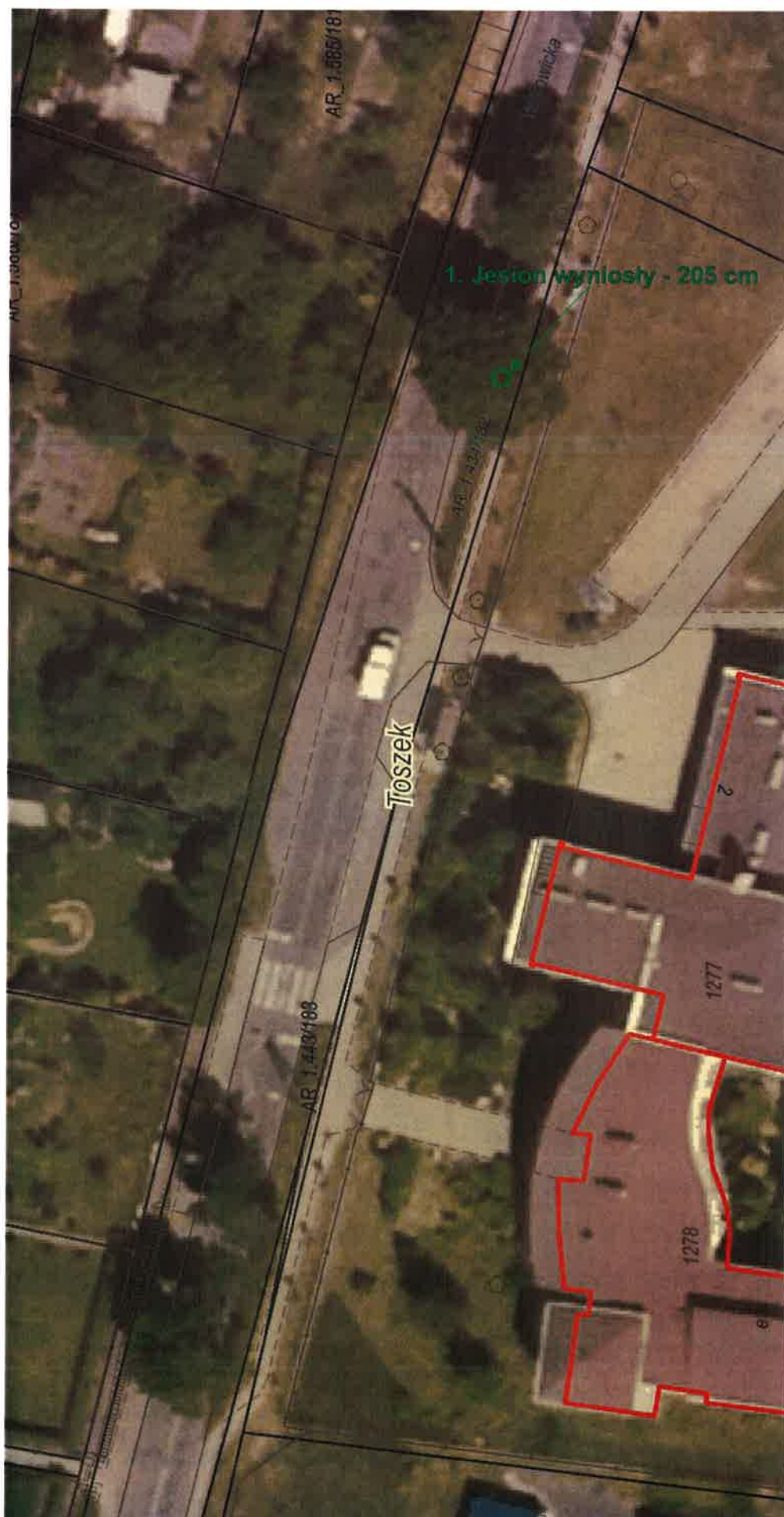


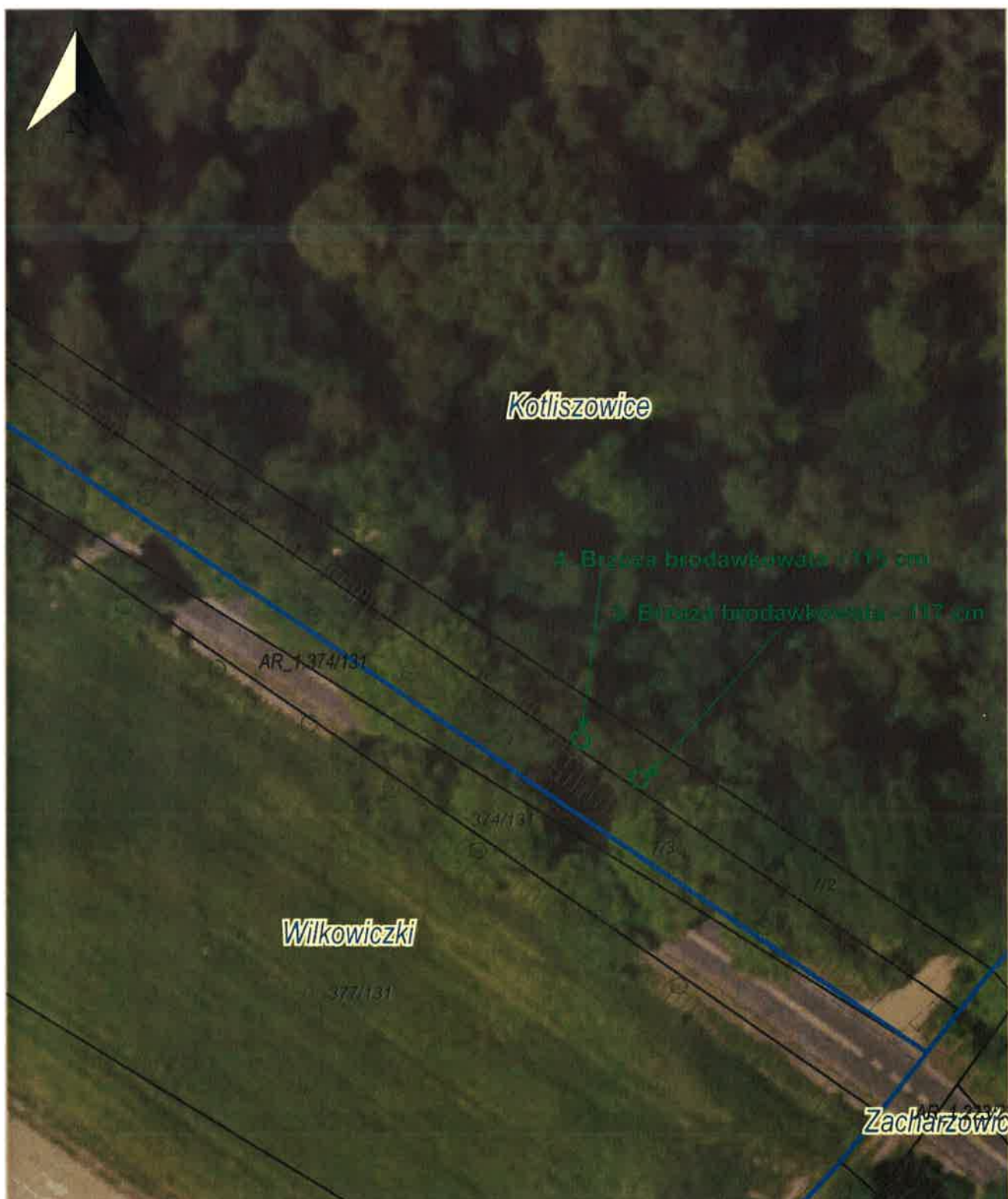
41





Handwritten signature in blue ink.



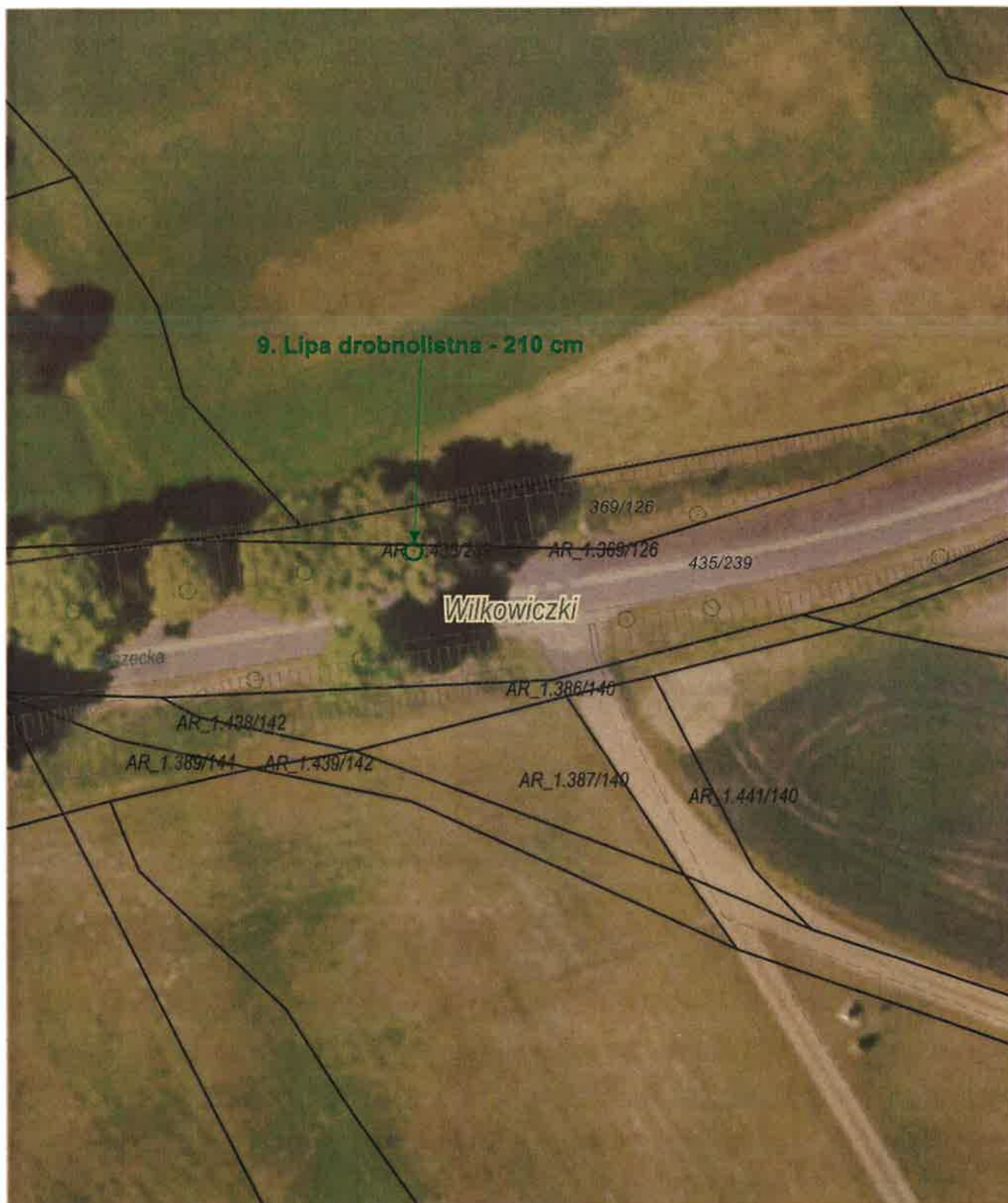


AN

DP 2950 S Wilkowiczki ul. Wiejska



DP 2950 S Wilkowiczki ul. Wiejska



4/11





4/1

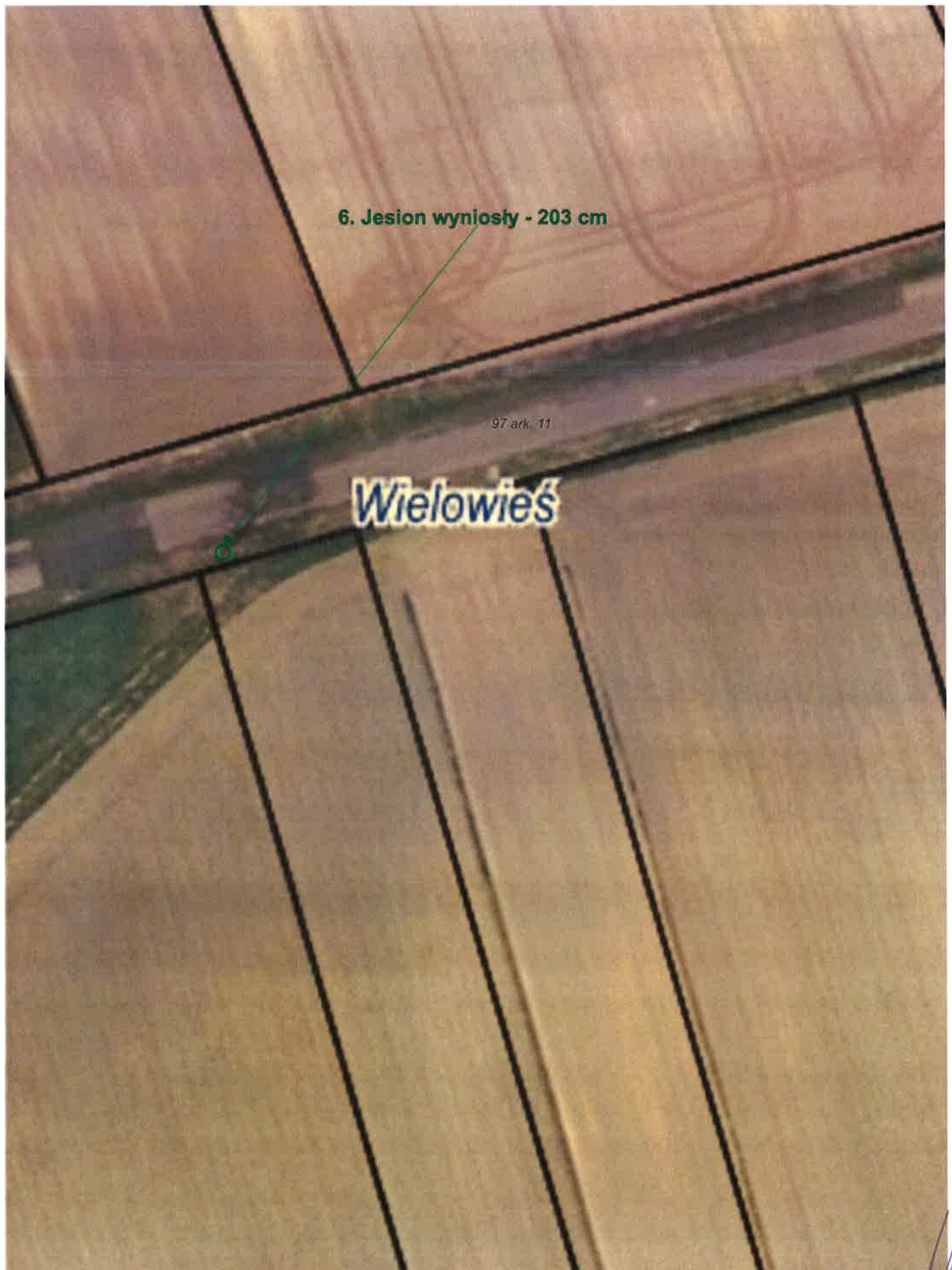












5. Topola balsamiczna - 211 cm

4. Topola balsamiczna - 193cm

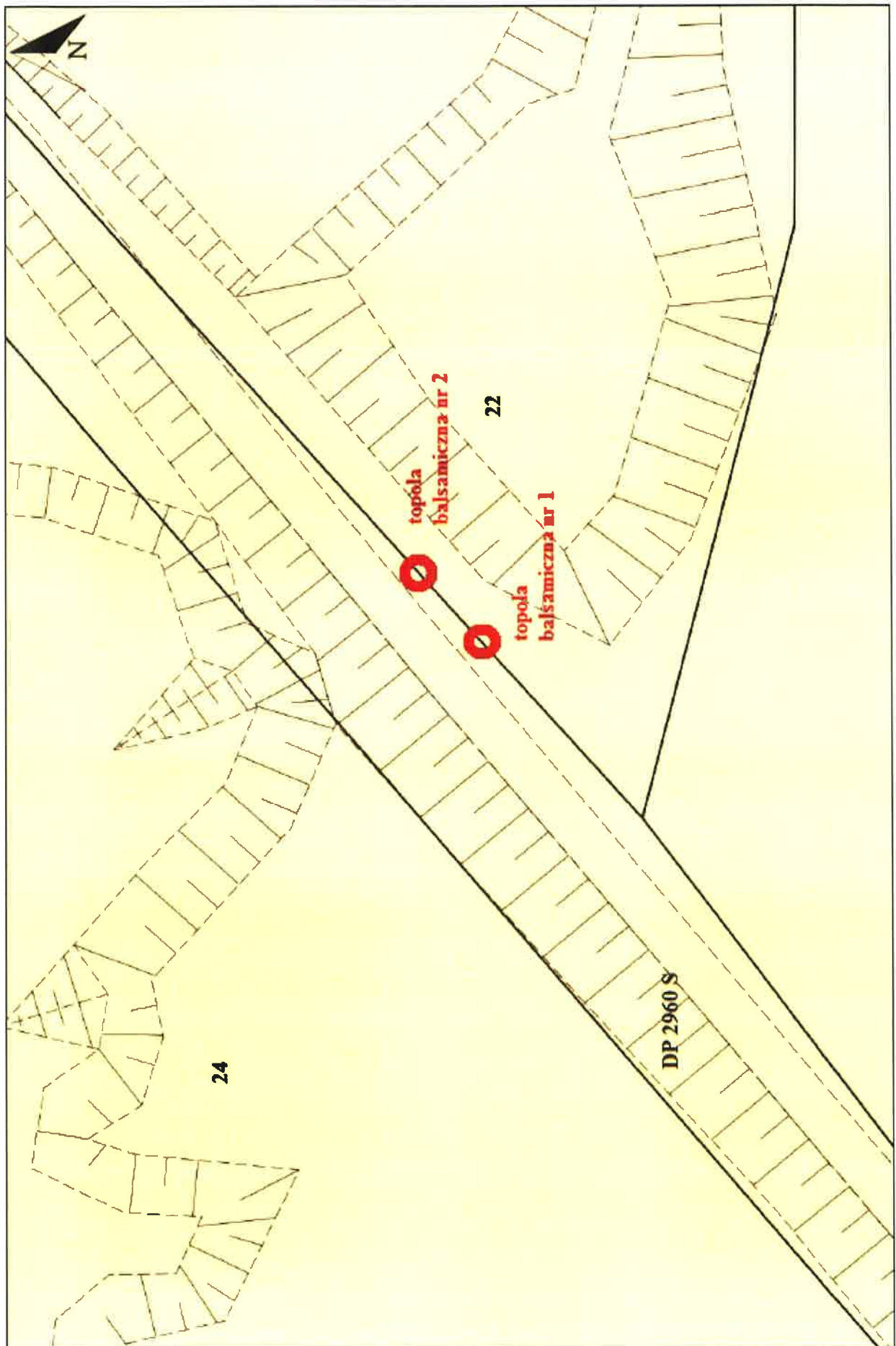
3. Topola balsamiczna - 236 cm

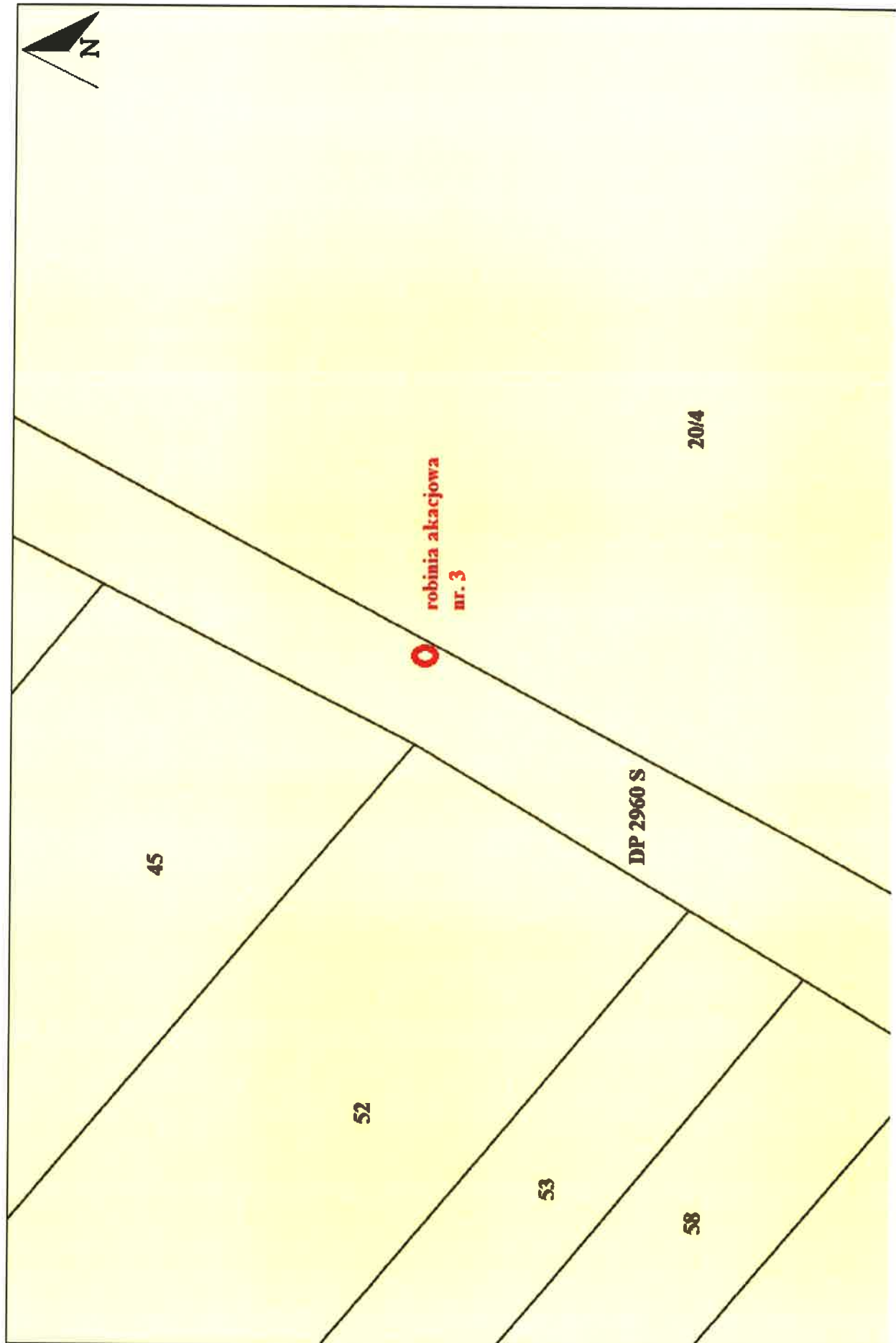
2. Topola balsamiczna - 170 cm

1. Topola balsamiczna - 187 cm



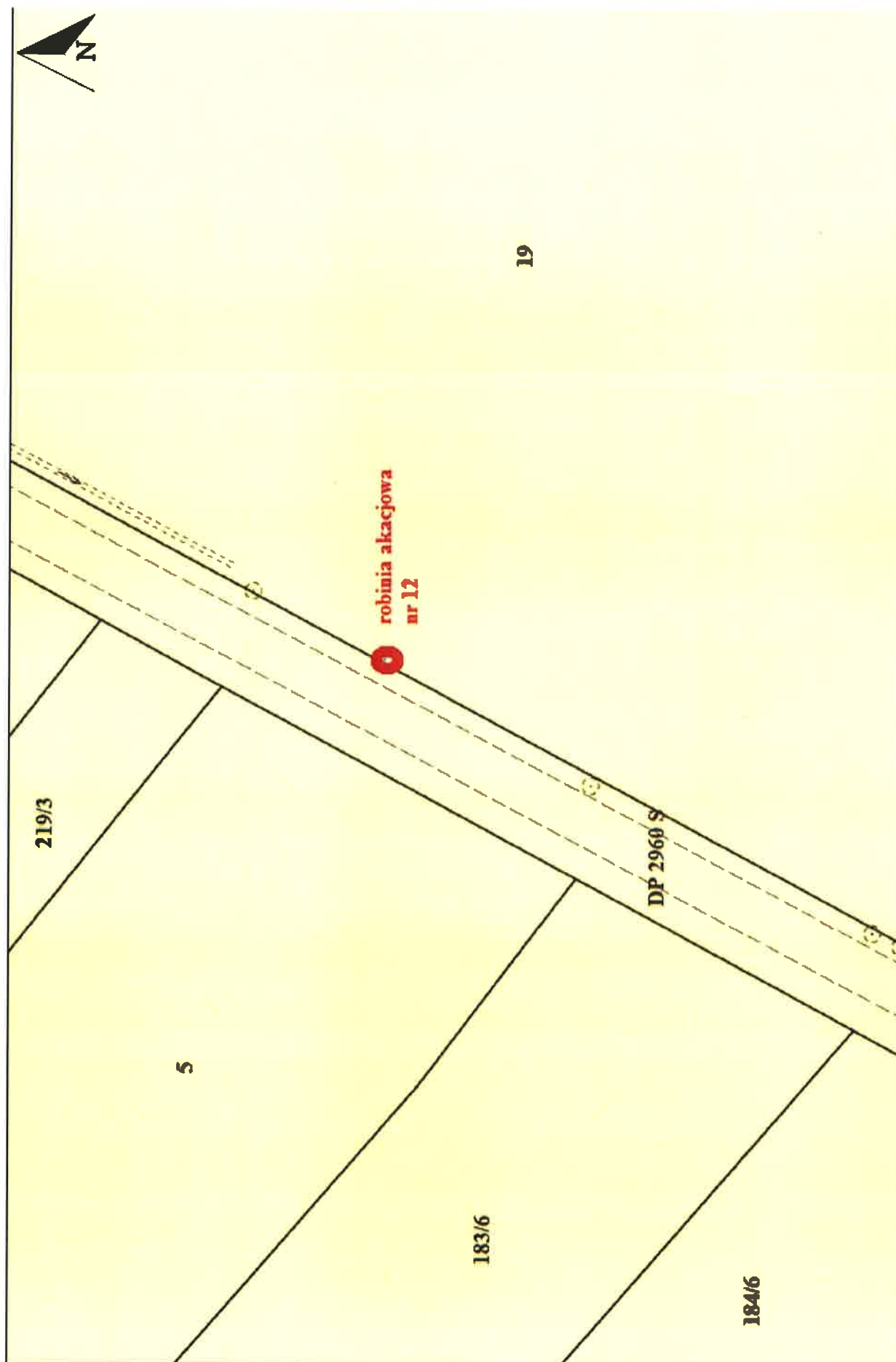
DP 2960 S Świbie (kierunek Sarnów)

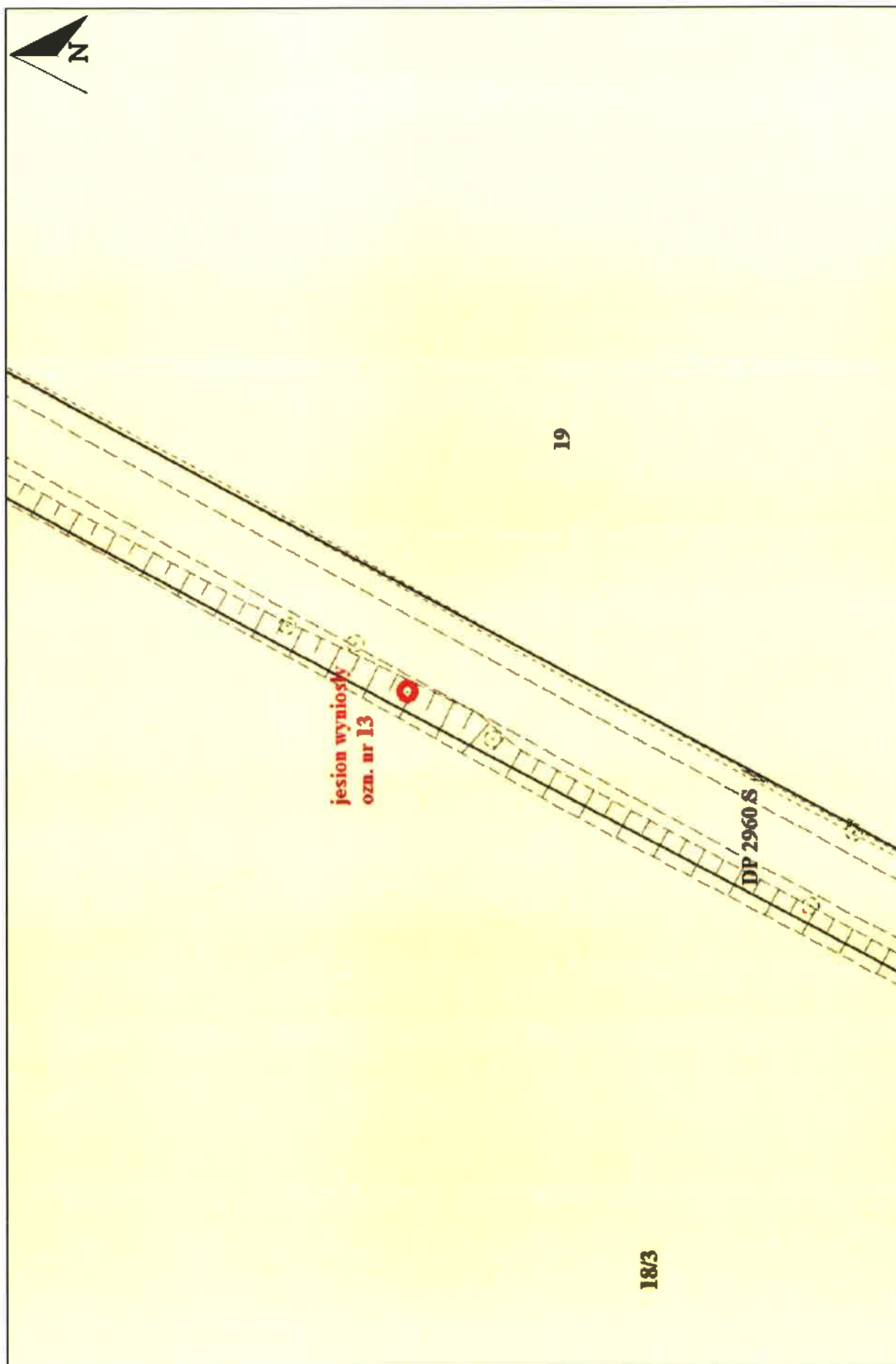




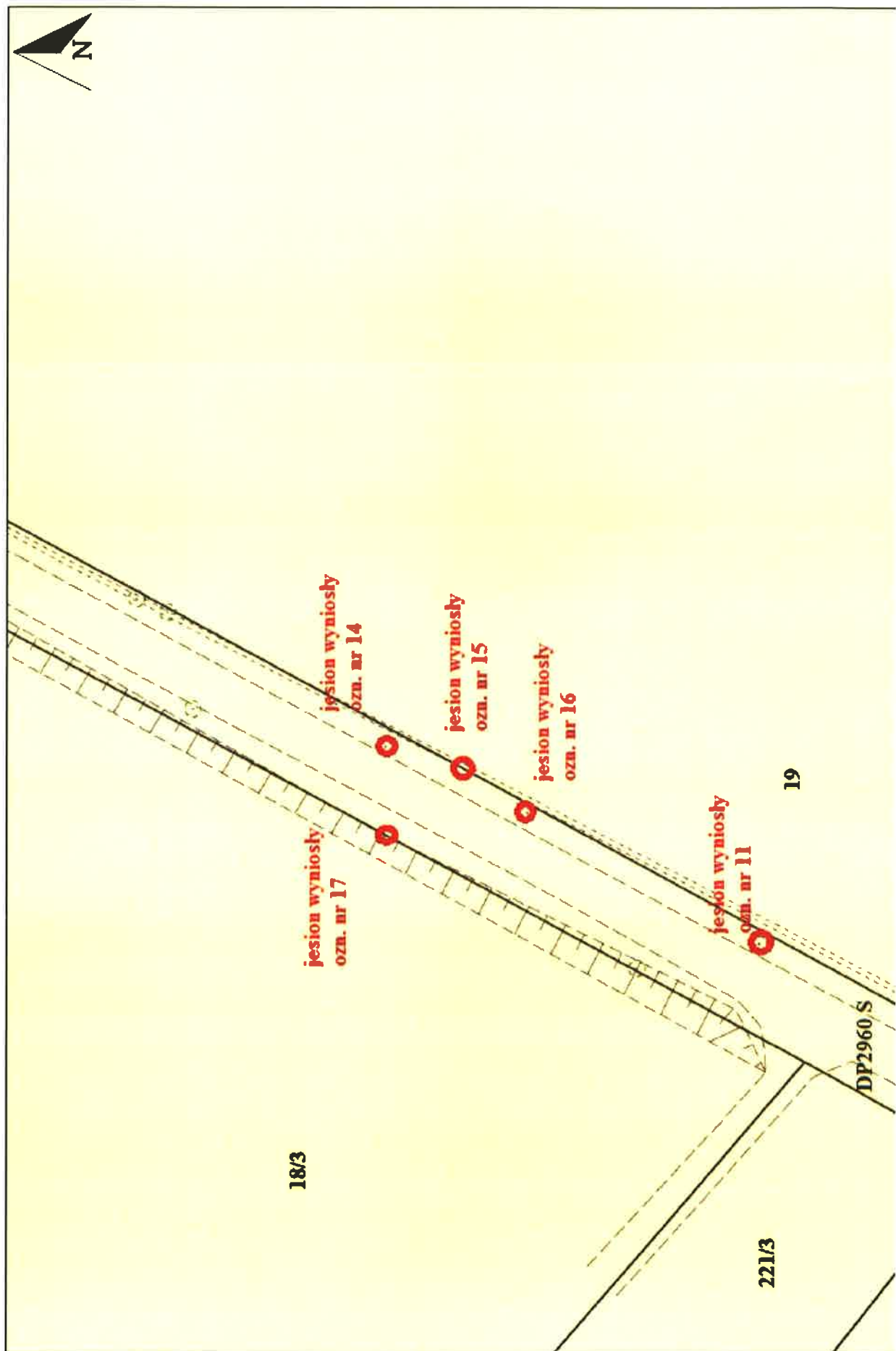


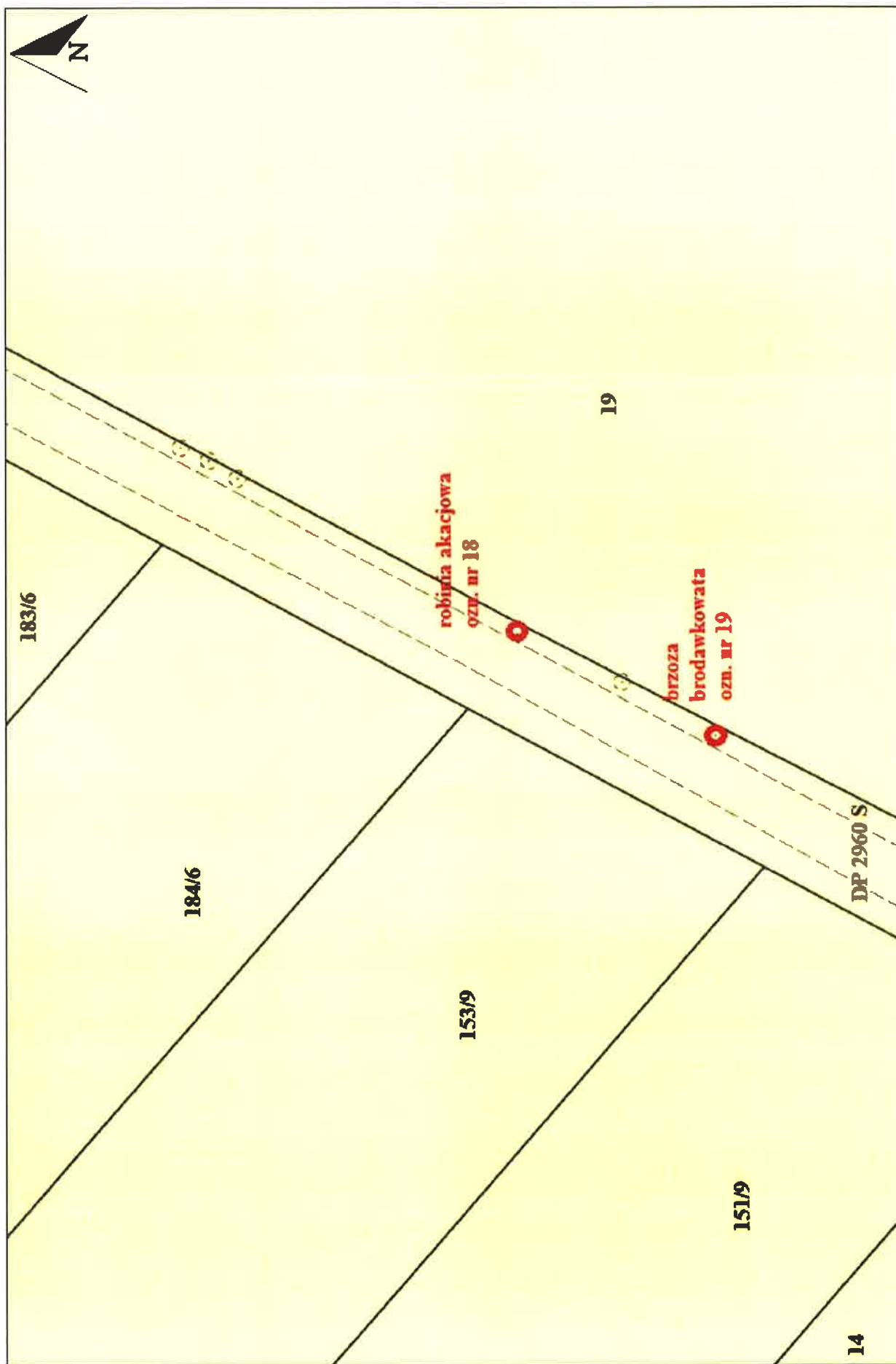
DP 2960 S Świbie (kierunek Sarnów)





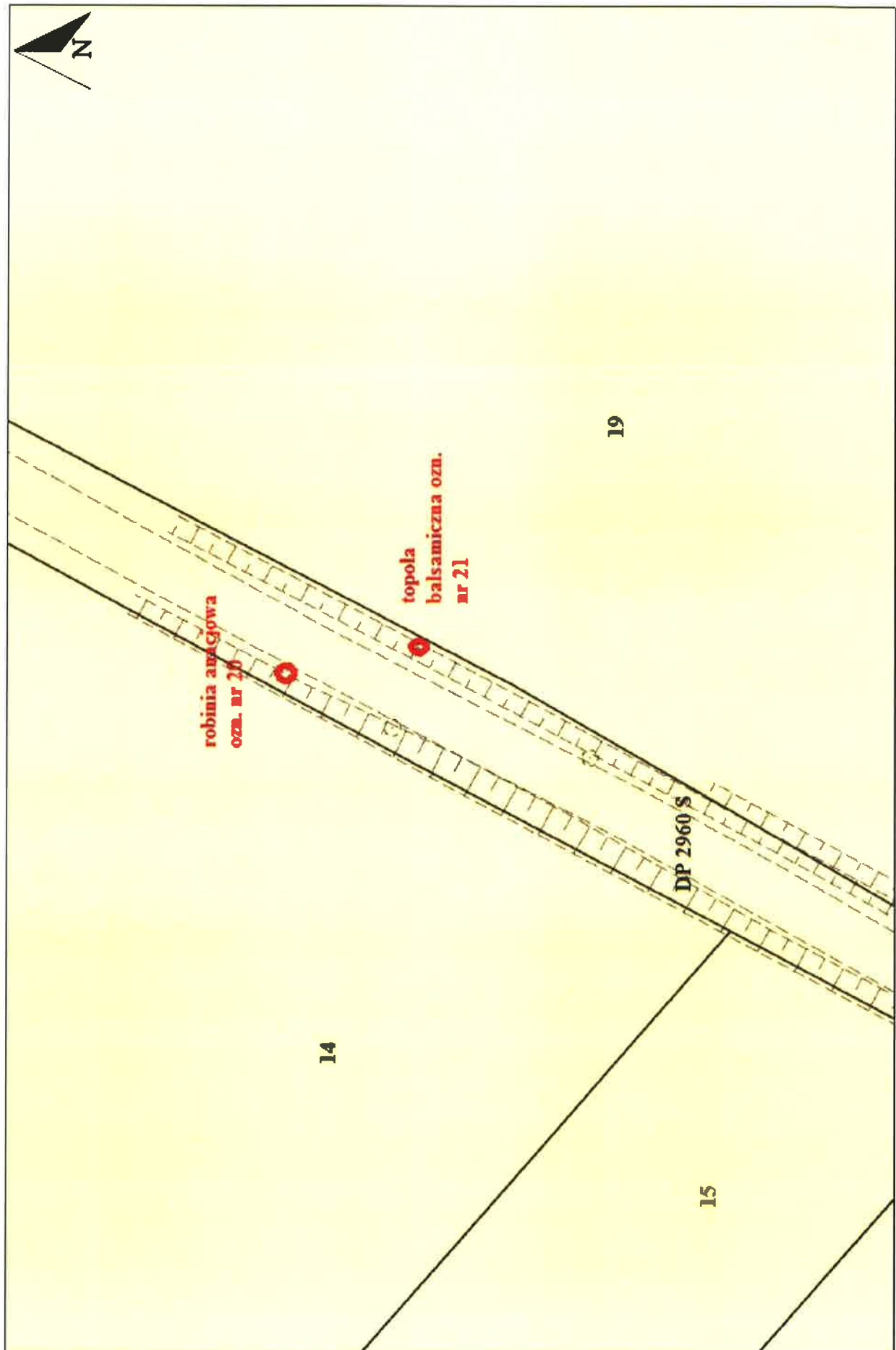
44



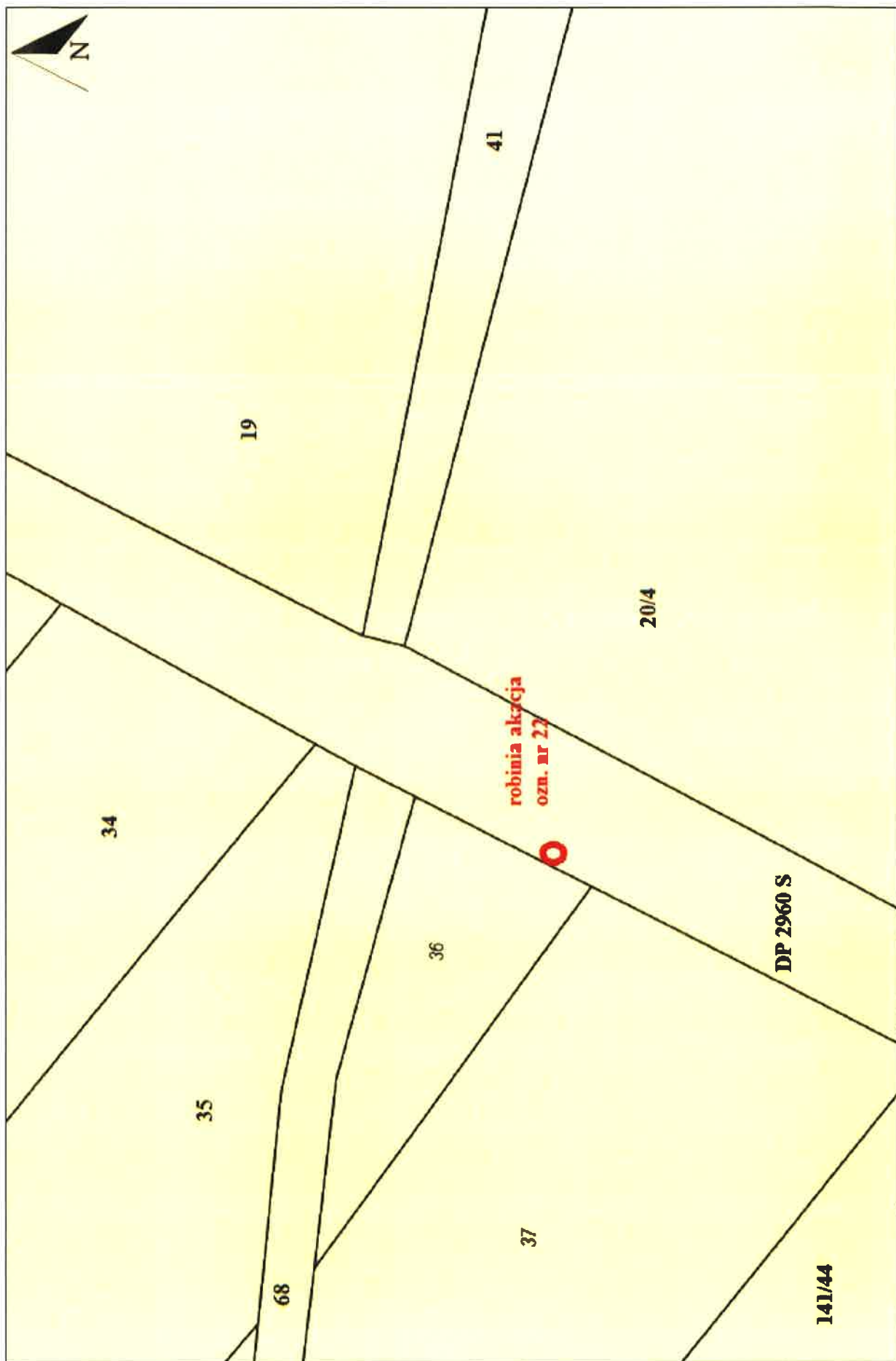


Handwritten signature in blue ink.

DP 2960 S Świbie (kierunek Sarnów)



DP 2960 S Świbie (kierunek Sarnów)



Handwritten signature in blue ink.

